

Be inspired to live the dream

COCOTRAIE

LUXURY TROPICAL LIVING & INTERIOR DESIGN



SRI LANKA'S
10 MOST
LUXURIOUS
RESORTS & VILLAS

FEATURING
TROPICAL MODERN
ARCHITECT
GEOFFREY BAWA

HERITANCE
KANDALAMA
AMANWELLA

ERAELIYA VILLAS
& **GARDENS**

AND
THE ELEGANT
POINTE SUD

PLUS
NIHIWATU
REDEFINING
LUXURY

HIDDEN ESCAPES
PHUM BAITANG
CAMBODIA

Luxury
Sri Lanka
Special



PHUM BATTANG

"More than just a new brand, it represents the birth of a new approach, driven by my own personal values : innovation, integrity, simplicity & pursuing excellence."

Arnaud Zannier



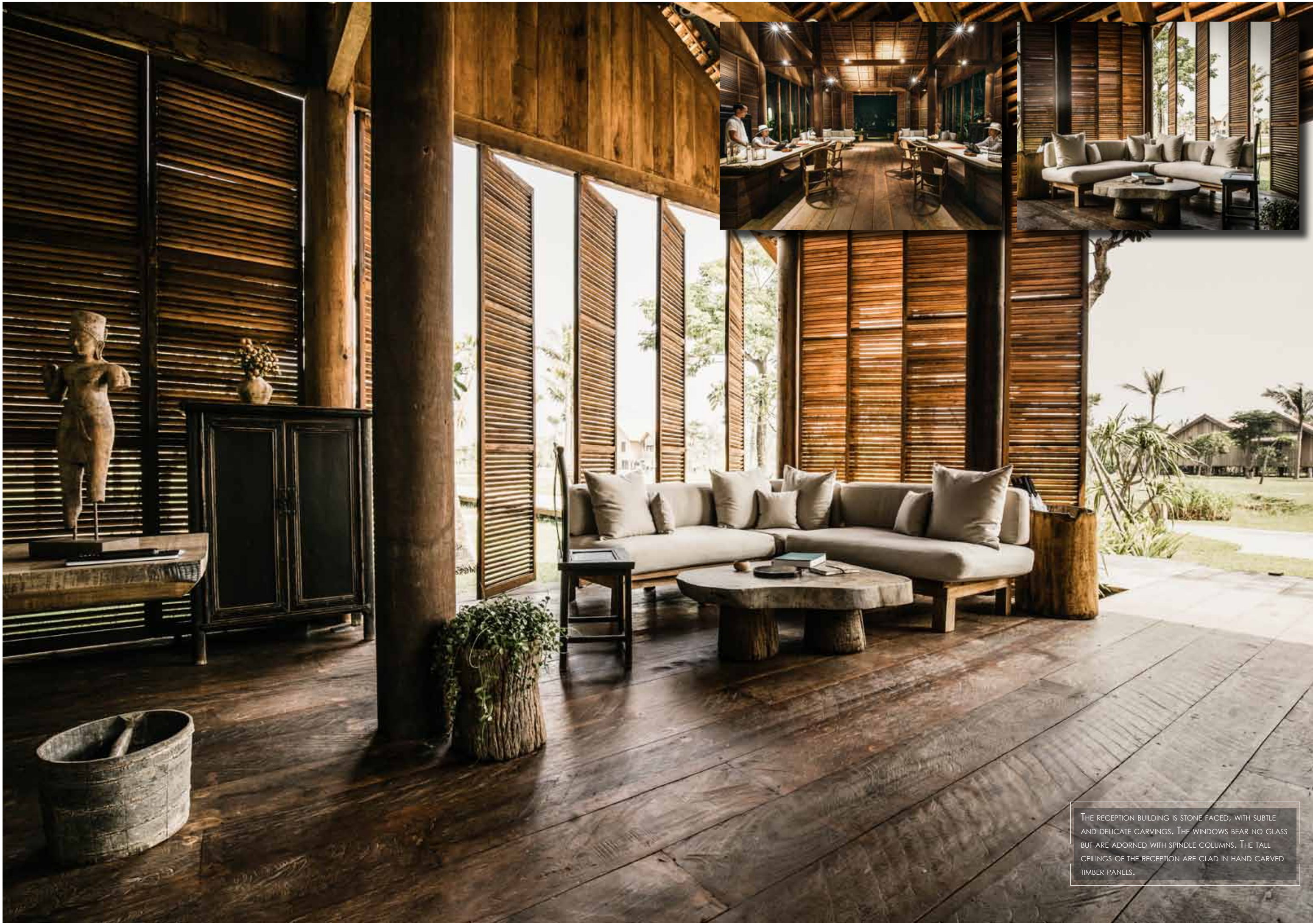
LOCATION
SIEM REAP, CAMBODIA
RESORT
PHUM BAITANG
OPENED
SEPT 2015
ARCHITECTURE
AW2, REDA AMALOU
CONCEPT & INTERIOR DESIGN
ZANNIER HOTELS &
GERALDINE DOHOGNE
PHOTOGRAPHS
COURTESY OF PHUM BAITANG

Reinforcing the growing trend towards authentic, eco conscious, understated luxury with designs which more harmoniously echo their environment, on the 1st of September 2015, with minimal fanfare French fashion entrepreneur Arnaud Zannier, of the family owned Zannier luxury hotel group, opened his latest addition to Cambodia's burgeoning hospitality market.

Set in a lush and intimate hideaway within eight acres of lush gardens, paddy fields and swaying plantations of verdant lemon-grass, Phum Baitang which means 'green village', is a 5* luxury resort near Siem Reap in

Cambodia, and a gateway to the UNESCO World Heritage Site Angkor, one of the most important archaeological sites in South-East Asia, hundreds of Khmer temples dating from the ninth to 15th centuries as well as numerous natural wonders and cultural experiences.

The property's forty-five spacious villas, twenty-five with private terrace and twenty with private plunge pool, have been organised in a similar manner to a local village. With each wooden and stilted villa inspired both inside and out by traditional Cambodian design. The décor is minimal but tasteful, with earthy palette that give the rooms a light and airy feel. ►



THE RECEPTION BUILDING IS STONE FACED, WITH SUBTLE AND DELICATE CARVINGS. THE WINDOWS BEAR NO GLASS BUT ARE ADORNED WITH SPINDLE COLUMNS. THE TALL CEILINGS OF THE RECEPTION ARE CLAD IN HAND CARVED TIMBER PANELS.

The sensational 50-metre infinity pool



TAKING PRIDE OF PLACE WITHIN THE RESORT THE TRANSFORMATION OF A 100 YEAR OLD FARMHOUSE INTO THE MAIN BAR IS WONDERFUL. ADORNED WITH ANTIQUE FURNISHINGS, RATTAN WING CHAIRS, PIE-CRUST TABLES AND ORIENTAL CARPETS, THE DETAIL OF THE INTERIOR IS A TRUE TESTAMENT TO THE TALENT AND ATTENTION TO DETAIL OF THE DESIGNER.



FOR ELEGANT DINING, PHUM BAITANG'S TWO RESTAURANTS, ONE LOCALLY INSPIRED AND THE OTHER OFFERING INTERNATIONAL CUISINE, SERVE DELICIOUS MEALS USING FRESH ORGANIC HERBS AND VEGETABLES FROM THE RESORT'S OWN GARDENS.





DRESSED IN COOL COTTONS AND LINEN WITH ELEGANT HANDMADE WOODEN FURNITURE ALL THE VILLAS ARE ON STILTS AND REFLECT TRADITIONAL CAMBODIAN STYLE WITH LUXURIES SUCH AS AMPLE BATHROOMS IN AGED WOOD AND STONE. POOL VILLAS COME WITH A PRIVATE PLUNGE POOL AS WELL AS A LUSH GARDEN AREA.

SIMPLE BUT SUPREMELY TASTEFUL EACH OF THE SUITES MADE WITH LOCAL STONE AND WOOD, HAVE ROUGH STONE SINKS AND BATHTUBS, ANTIQUE CARVED HEADBOARDS, A FEW POTTERY JARS AND LANTERN-STYLE LIGHTING.



A luxurious and tranquil Spa Temple offers seven treatment rooms, a sauna, steam room and relaxation area. A yoga pavilion, fully-equipped fitness room and 50m outdoor infinity pool complete the resort's leisure facilities.

Each of Zannier's properties are infused with a deep awareness of local country traditions which makes it easier to understand how the way of life and considerations such as climate and local customs have a strong influence on construction techniques. When one looks closely at the exterior and interior design, structure, artwork and furnishings, Phum Baitang demonstrates a commitment to doing things extremely well and with a focus on attention to the detail. The design focus is all about the essentials with none of the familiar references to superfluous decoration. The resort features the strong use of natural textures, colours and local materials: wood, stone, bamboo and thatch, important facets which form an integral part of the overall aesthetic.

There is an emphasis here on creating art from old objects, using raw materials which will, as they age, display added warmth and character. It is clear to see that Phum Baitang is one the finest examples of indigenous architecture adapted to offer an authentic and yet understated luxurious experience. ☯

FMI

www.phumbaitang.com
email: contact-phumbaitang@zannier.com
tel: +855 (0)63 961 111



THE SPA TEMPLE CREATES AN ATMOSPHERE THAT REFLECTS THE DESIGNER'S VISION OF SIMPLICITY WITH KHMER ARTEFACTS ADORNING ALL OF THE TREATMENT PAVILIONS. THIS UNIQUE SPA'S INTERIOR WAS FASHIONED BY MIXING ARTISAN ANTIQUES WITH THE DAPPLIED, LIGHT FILLED RECEPTION SPACE.

